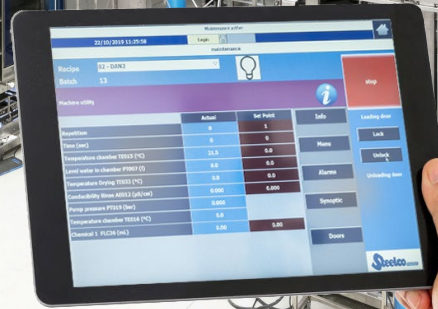




Remote FAT service

A new approach to performing Factory Acceptance Testing, by Steelco.



In order to support our customers, Steelco has introduced an alternative way to perform FAT – Factory acceptance Testing.

FAT is an activity that our client usually has to perform at the Steelco production site. During a factory visit, customers verify that the equipment is manufactured according to URS (User requirements specifications) and meets the relevant Good Manufacturing and Engineering Practices. It is also usually a contractual milestone.

Today, thanks to advanced information technologies, all the procedures and testing, together with the related documentation can be executed remotely.

Remote FAT is a smart alternative that simplifies the process, reducing the time required for staff to be away from the office and the associated costs including: travel, accommodation, visa application etc.

How is it performed?

Remote FAT is based on a cloud service, a combination of web apps by using smartphones, tablets or webcams. FAT is performed using video, real-time voice communication, file and screen sharing.

A dedicated team of Steelco engineers is available for support customers step by step during execution of the FAT protocol. There are several webcams and smartphones in use, so the focus can be shifted to different components, using zoom-in or out functions, or by switching camera views. Data are easily monitored and saved, and a live chat function is always available.

Web apps in use



For more details, please contact Steelco Pharma or your Project Manager.